



OPSCO

CLEAN WATER SYSTEMS

A DIVISION OF ORCHARD PUMP & SUPPLY CO.

Product Catalog



7300 Acid Neutralizer

The **OPSCO 7300 Series Acid Neutralizer** removes Acidity from your water by neutralizing free Carbon Dioxide. Saving you money by stopping corrosion in your plumbing which over time can result in costly repairs or replacement of plumbing, fixtures and valuable appliances. Regular automatic backwashing provides superior water quality, neutralizing the acid to normal pH levels. This leaves your water sparkling clean and tasting great.

Features:

- Standard Warranty
- Polyglass Mineral Tank
- Intuitive Touchscreen with full diagnostics
- High Flow Distribution System
- Standard Bypass on Control Valve allows for ease of Installation and Service

Acid Neutralizers - 7300 Series

Model #	Mineral Tank Size	Cubic Feet	Service Flow	Backwash Rate	Pipe Size	Max. Pressure
OP7300-2D	10" x 54"	1.5	5 GPM	5 GPM	1"	125 PSI
OP7300-3D	12" x 52"	2	6 GPM	9 GPM	1"	125 PSI
OP7300-4D	13" x 54"	2.3	7 GPM	10 GPM	1"	125 PSI

Acid Neutralizers - Media Selection

Item #	Description	Used For
A8001	Neutralite	pH
MB700	pH Booster	Difficult pH Conditions



7300 Air Eductor

The **OPSCO 7300 Air Eductor Series** removes iron, sulfur and raises pH to significantly reduce and or remove bad taste, odor, color which causes staining of fixtures and clothing. This system will improve the overall performance and efficiency of your entire water treatment system by acting as a pre-treatment to your water.

Features:

- Polyglass Mineral Tank
- Intuitive Modern Pro Touch Control Valve
- Unique Air Education Control Valve
- Custom Blended Filtration Media
- Convenient Fill Hole
- Custom Built-In Check Control Valve
- Standard Bypass on Control Valve allows for ease of installation and service.

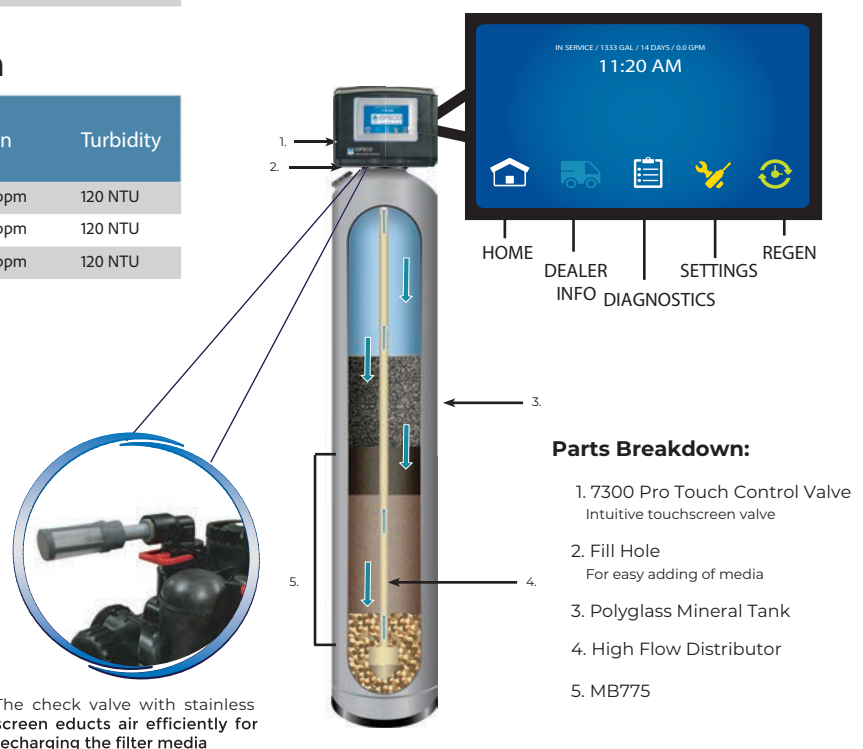


Air Eductors - 7300 Series

Model #	Mineral Tank Size	Cubic Feet	Service Flow	Backwash Rate	Pipe Size	Max. Pressure
OP7300-2E	10" x 54"	1.5	5 GPM	5 GPM	1"	125 PSI
OP7300-3E	12" x 52"	2	6 GPM	9 GPM	1"	125 PSI
OP7300-4E	13" x 54"	2.3	7 GPM	10 GPM	1"	125 PSI

Air Eductors - Media Selection

Model #	Standard Media	Oxidation System	pH	Sulfur	Iron	Turbidity
OP7300-2E	MB775	Eductor	6.2-8.5	10 ppm	10 ppm	120 NTU
OP7300-3E	MB776	Eductor	6.2-8.5	10 ppm	10 ppm	120 NTU
OP7300-4E	MB777	Eductor	6.2-8.5	10 ppm	10 ppm	120 NTU



7300 Ozone Educator

The **OPSCO 7300 Ozone Series** removes bad taste, odor, color which causes staining of fixtures and clothing. This system will improve the overall performance and efficiency of your entire water treatment system by acting as a pre-treatment to your water.

Features:

- Polyglass Mineral Tank
- Intuitive Modern Pro Touch Control Valve
- Unique Air Education Control Valve
- Custom Blended Filtration Media
- Convenient Fill Hole
- Custom Built-In Check Control Valve
- Standard Bypass on Control Valve allows for ease of installation and service.

Air Educators - 7300 Series

Model #	Mineral Tank Size	Cubic Feet	Service Flow	Backwash Rate	Pipe Size	Max. Pressure
OP7300-2EO	10" x 54"	1.5	5 GPM	5 GPM	1"	125 PSI
OP7300-3EO	12" x 52"	2	6 GPM	9 GPM	1"	125 PSI
OP7300-4EO	13" x 54"	2.3	7 GPM	10 GPM	1"	125 PSI

Air Educators - Media Selection

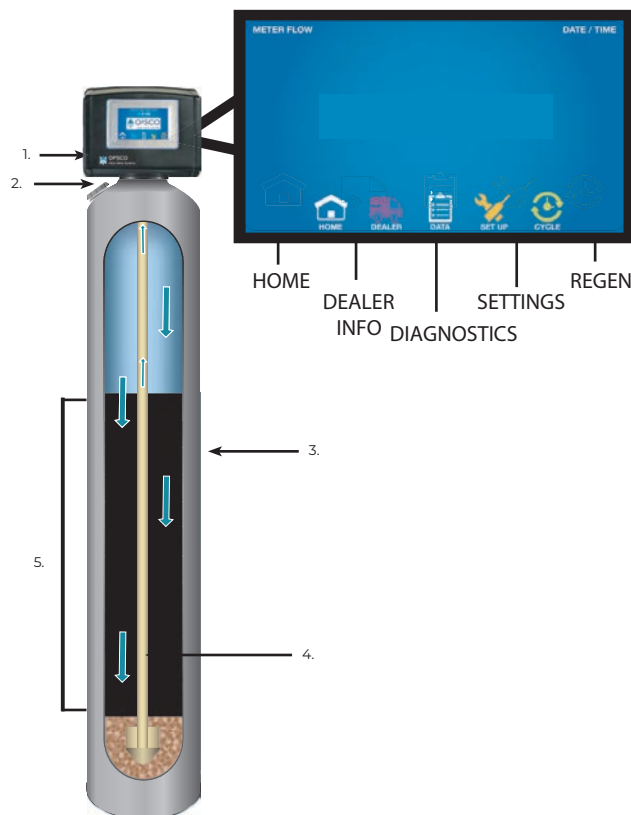
Model #	Standard Media	Oxidation System	pH	Sulfur	Iron	Turbidity
OP7300-2EO	MB775	Eductor	6.2-8.5	10 ppm	10 ppm	120 NTU
OP7300-3EO	MB776	Eductor	6.2-8.5	10 ppm	10 ppm	120 NTU
OP7300-4EO	MB777	Eductor	6.2-8.5	10 ppm	10 ppm	120 NTU



Parts Breakdown:

1. 7300 Pro Touch Control Valve
Intuitive touchscreen valve
2. Fill Hole
For easy adding of media
3. Polyglass Mineral Tank
4. High Flow Distributor
5. Activated Carbon

The Ozone System produces Ozone efficiently for recharging the filter media.



7300 Series Stainless Filter

The **OPSCO 7300 Residential Stainless Filter Series**, is our most innovative and efficient design. The contemporary touch screen reduces installation errors and easily allows the ability to monitor daily water savings. Our USA manufactured products make the highest quality water available for your family.

Features:

- Intuitive Modern Pro Touch Control Valve
- High-Quality Ion Exchange Resin
 - High Capacity
- Polished Stainless Steel Carbon Tanks up to 36"
- Versatile Meter Initiated Regeneration Cycles
- Top Mounted Valves with Optional Side Mount
- Unique Touch Alternate Cycle Sequencing
- Valve Error Log and Effortless Diagnostics
- Manufactured in the USA

Note:

- Control Valve certified under Clack Corporation
- Resin certified under Resin Tech



Filters - 7300 Series

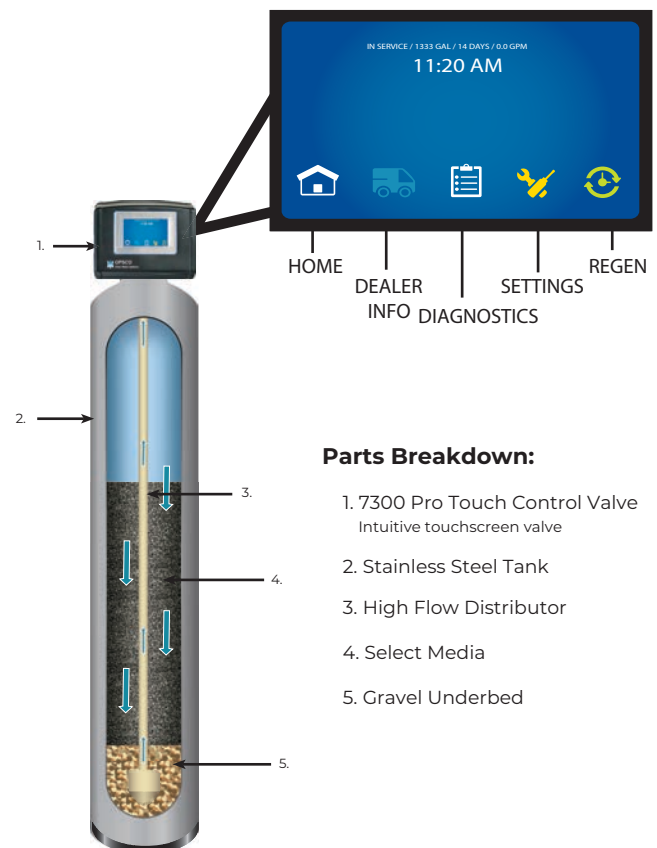
Model #	Mineral Tank Size	Cubic Feet	Service Flow	Backwash Rate	Pipe Size	Max. Pressure
OP7300-2	10" x 54"	1.5	5 GPM	5 GPM	1"	125 PSI
OP7300-3	12" x 52"	2	6 GPM	9 GPM	1"	125 PSI
OP7300-4	13" x 54"	2.3	7 GPM	10 GPM	1"	125 PSI

Filters - Media Selection

Item #	Description	Used For
A8041-P	Greensand Plus	Iron
KL-L	Oxidation Media	Iron/Sulfur
A8014	Filter Ag	Sediment
AGC-40-AW	Dust Free Carbon	Taste/Odor

Multi-Layer Media Filter Packages

Model #	Description	Package Type
ML8110	10" Dia. Tk. 6/skid	Pail
ML8112	12" Dia. Tk. 6/skid	Pail
ML8113	13" Dia. Tk. 6/skid	Pail



Parts Breakdown:

1. 7300 Pro Touch Control Valve
Intuitive touchscreen valve
2. Stainless Steel Tank
3. High Flow Distributor
4. Select Media
5. Gravel Underbed

Downflow Filter

The **OPSCO Non-Backwashing Systems** use a simplified approach to whole-home and light commercial filtration needs. Non-Backwashing Downflow Systems with activated carbon media offer an alternative filtration solution for many applications across a range of flow rates. Several system sizes and media options allow customization for specific filtration needs using Fiberglass tanks matched with our versatile In & Out Valve with 1" porting.

Features & Benefits:

- More effective than disposable activated carbon cartridge type filters
- Many tank options to accommodate a wide range of flow rates
- Simple installation saves money
- Requires no backwash water or electricity
- No moving parts
- Easy to maintain
- Media options for your specific water
- An alternative to backwashing systems for selected applications

Product Specifications Benefits:

- Simple design with no moving parts
- No backwash or rinse cycles saves water
- Non-electric saves energy
- System options to improve water quality by reducing *: Chlorine, *Chloramine, *Disinfection Byproducts (DBPs)
- Activated carbon models prolong life of softening resins
- pH Neutralization for acidic water (Upflow models only)

Features:

- Different sized models to accommodate a wide range of flow rates
- Bypass Valve included
- Downflow and Upflow system options
- Built-in 1/4" ports for: - Sampling Valves - Pressure Gauges

Downflow Filters

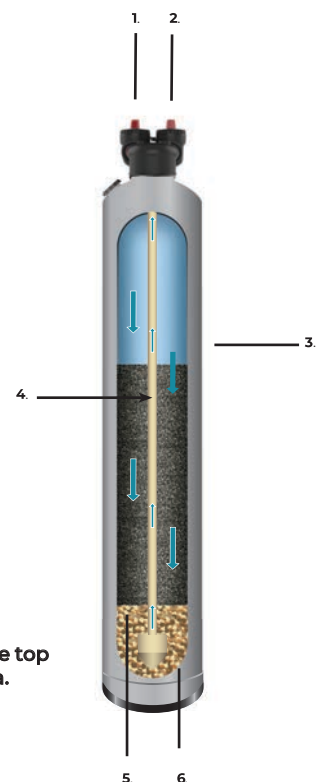
Model #	Mineral Tank Size	Cu./ Ft.	Service Flow	Backwash Rate	Pipe Size	Max. Pressure
DF1040C	9" x 48"	1.0	5 GPM	N/A	3/4"	125 PSI
DF1054C	10" x 54"	1.5	5 GPM	N/A	3/4"	125 PSI
DF1252C	12" x 52"	2.0	10 GPM	N/A	3/4"	125 PSI



Parts Breakdown:

1. Outlet
2. Inlet
3. Polyglass Mineral Tank
Sturdy and rust proof media housing
4. High Flow Distributor
5. Carbon Media
6. Gravel Underbed

The water enters the media from the top and then flows through the media.



7300 Series Stainless Softener

The **OPSCO 7300 Residential Pro Touch Series** is our most innovative and efficient design. The contemporary touch screen reduces installation errors and easily allows the ability to monitor daily water savings. Our USA manufactured products make the highest quality water available for your family.

Features:

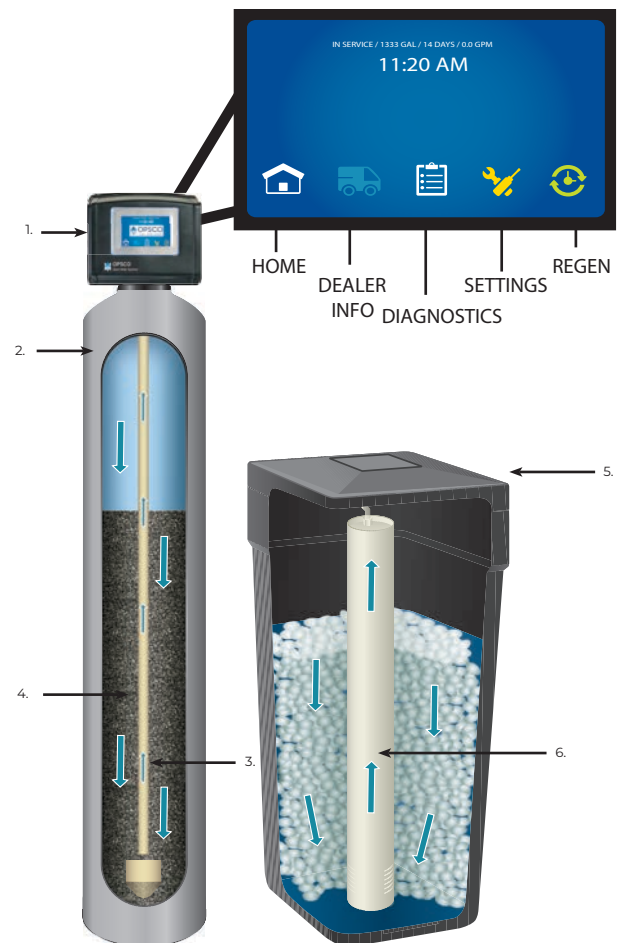
- Intuitive Modern Pro Touch Control Valve
- High-Quality Ion Exchange Resin
 - High Capacity
- Polished Stainless Steel Mineral Tanks up to 36"
- Versatile Meter Initiated Regeneration Cycles
- Complete Brine Tank and Float Assembly
- Top Mounted Valves with Optional Side Mount
- Unique Touch Alternate Cycle Sequencing
- Valve Error Log and Effortless Diagnostics
- Manufactured in the USA

Note:

- Control Valve certified under Clack Corporation
- Resin certified under Resin Tech

Softeners - 7300 Series Stainless Tank

Meter Model #	Service Flow GPM	Brine Tank lbs.	Min. Salt FT3	Max. Salt FT3	Pipe Size	Tank Size	Min. Grain Capacity	Max. Grain Capacity	Weight lbs.
OP7300SM-3	8	275	6	18	1"	8" x 48"	20,000	32,000	108
OP7300SM-5	9	275	9	27	1"	10" x 48"	30,000	48,000	140
OP7300SM-6	10	275	12	36	1"	12" x 48"	40,000	64,000	165



Parts Breakdown:

1. 7300 Pro Touch Control Valve
Intuitive touchscreen valve
2. Stainless Tank
3. Distributor Tube
4. High Capacity Resin
5. Brine Tank
6. Brine Safety Float Assembly
Prevents overflow during refill

Note:

Turbulator Adder Option. Add "T" to Model.

7300 Series Softener

The **OPSCO Touchscreen Series** will save you money in various ways. You will reduce the amount of soap and detergent needed for household cleaning and laundry. Also, with the touchscreen series you will reduce the need for costly plumbing repairs and replacement of fixtures. This series will provide you and your family with clean, superior tasting water.

Features:

- Intuitive Modern Pro Touch Control Valve
- Polyglass Mineral Tank
- High Capacity Ion Exchange Resin
- Complete Brine Tank and Float Assembly
- Unique Touch Alternate Cycle Sequencing
- Valve Error Log and Effortless Diagnostics
- Standard Bypass on Control Valve allows for ease of installation and service.

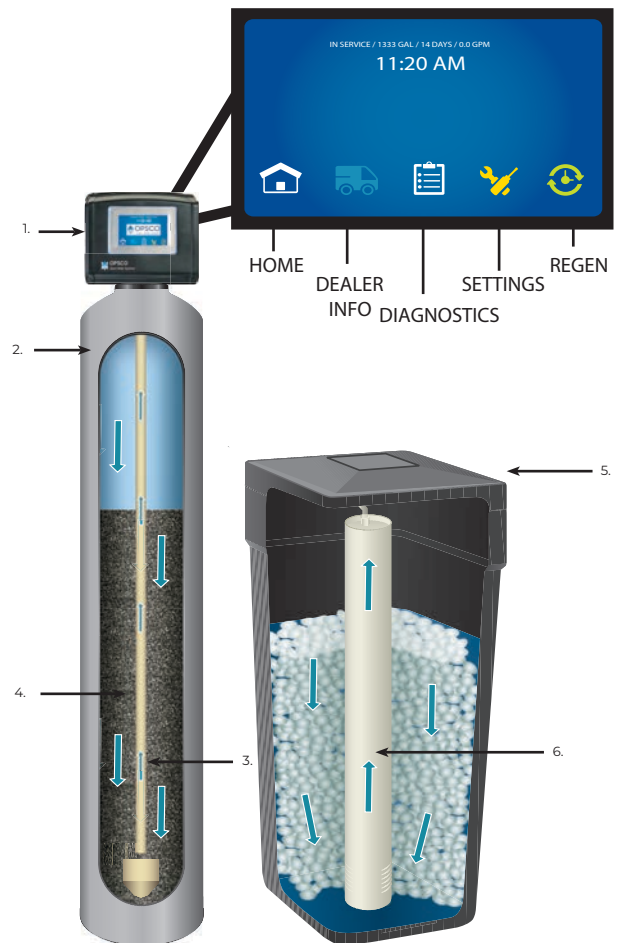


Softeners - 7300 Series Fiberglass Tank with Meter

Meter Model #	Service Flow GPM	Brine Tank lbs.	Min. Salt FT3	Max. Salt FT3	Pipe Size	Tank Size	Min. Grain Capacity	Max. Grain Capacity	Cu/ft	Weight lbs.
OP7300M-2	6	275	5	12	1"	8" x 44"	15,000	24,000	.75	87
OP7300M-3	8	275	6	18.5	1"	9" x 48"	20,000	32,000	1.0	108
OP7300M-5	9	275	9	28	1"	10" x 54"	30,000	48,000	1.5	140
OP7300M-6	10	275	12	37	1"	12" x 52"	40,000	64,000	2.0	165
OP7300M-7	12	450	15	37.5	1"	13" x 54"	50,000	75,000	2.3	195

Parts Breakdown:

1. 7300 Pro Touch Control Valve
Intuitive touchscreen valve
2. Fiberglass Tank
3. Distributor Tube
4. High Capacity Resin
5. Brine Tank
6. Brine Safety Float Assembly
Prevents overflow during refill



7300 Series City Softener

The **OPSCO 7300 Softener Combo Plus** has the benefits of removing chlorine and softening at the same time for that city water that is corrosive and hard the combo plus delivers clean non corrosive water.

Features:

- Clean Healthy Water Acid washed activated carbon to improve color, taste, odor
- Intuitive Touchscreen with full diagnostics
- Meter Regenerated
- Fully Programmable
- Fill Port for easy maintenance

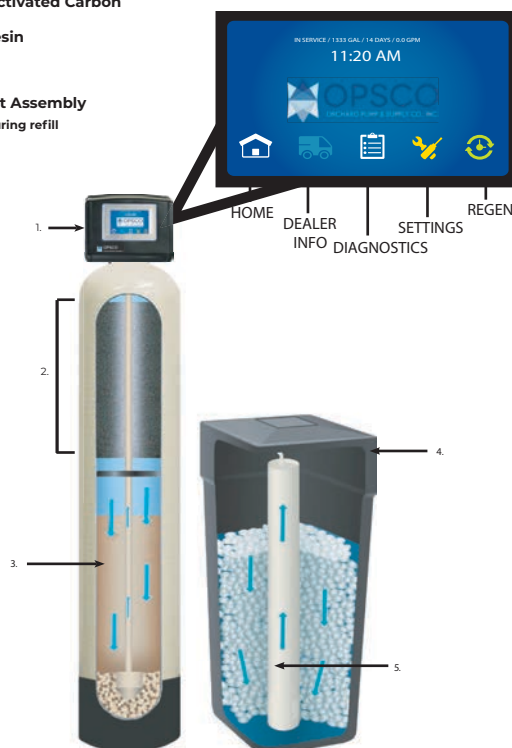
Softeners - 7300 Series Dual Tank with Meter

Model #	Service Flow GPM	Brine Tank lbs.	Min. Salt FT3	Max. Salt FT3	Pipe Size	Tank Size	Min. Grain Capacity	Max. Grain Capacity	Weight lbs.
OP7300MPM-SAC	9	275	6	15	1"	10" x 54"	24,000	32,000	125



Parts Breakdown:

1. **7300 Pro Touch Control Valve**
Intuitive touchscreen valve
2. **Acid Washed / Activated Carbon**
3. **High Capacity Resin**
4. **Brine Tank**
5. **Brine Safety Float Assembly**
Prevents overflow during refill



7300 Cabinet Softener

The **OPSCO 7300 Cabinet Softener** saves you money on salt and water. It uses a highly efficient resin that reduces hardness in your water.

FEATURES:

- Works with a high capacity resin that reduces hardness
- Offers low maintenance with automatic cleaning cycles
- Automatic Bypass- water available even during regeneration
- **Compact size that fits under stairs and in closets**
- Non-Corrosive poly mineral tank, thermo plastic brine tank
- Controller is easily programmed to family demands

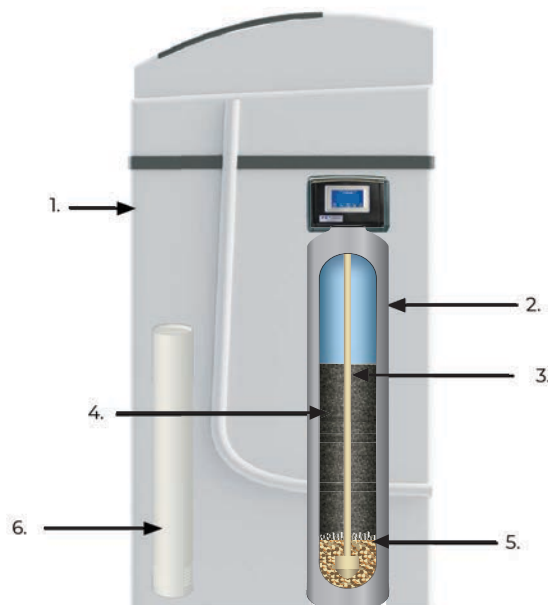


Cabinet Softener - 7300 Series

Model #	Service Flow GPM	Brine Tank LBS	Min. Salt FT3	Max. Salt FT3	Pipe Size	Tank Size	Min. Grain Capacity	Max. Grain Capacity	Weight lbs.
OP7300M-3T	8	275	6	18.5	1"	10" X 35"	20,000	32,000	102

Parts Breakdown:

1. Cabinet
2. Mineral Tank
3. High Flow Distributor
4. High Capacity Resin
5. Gravel Underbed
6. Brine Safety Float Assembly
Prevents overflow during refill





Reverse Osmosis Series

The **OPSCO RO Series** cutting edge Reverse Osmosis purification technology to provide safe, contaminant free water to your home or office, 24 hours a day, 7 days a week. Our state-of-the-art RO Series is an effective way to remove common harmful contaminants such as lead or nitrates from your water source, for a healthier and superior-tasting water.

Features:

- 5 Stage RO Filtration System
- FDA Compliant Materials
- 3.2 gallon Storage Tank
- Standard Warranty
- 75 gallon per Day Output
- Attractive Ceramic Disc Faucet
- Permeate Pump Option Available for Low PSI
- All Poly tubing is Color Coded for Easy Install
- Water Feed Install Kit, including Ball Valve Shut-Off and Quick Change Sanitary Style Cartridges



RO Series

Model #	Faucet Finish	Dimensions	Pipe Size	Max. Flow
OPPRO-Q-75	Polished Chrome	15" x 21" x 3.5"	1/4"	75 GPD
OPPRO-Q-75P	Polished Chrome	15" x 21" x 3.5"	1/4"	75 GPD

RO Series Accessories

Model #	Description
OP4P-1235	Replacement Filter Kit for PRO-Q-75
OPQME-75-W	Replacement Membrane for PRO-Q-75
OPFR-575T	Capillary Flow Restrictor 75 gal.
OPASV-4000QP	1/4" RO Auto Shutoff Valve
OPFLR-520	Standard Halfurn Faucet-Chromes
OPFLR-520BN	PRO-Q faucet Brush Nickel
OPFLR-520RB	PRO-Q faucet Rub Bronze
OPICF-2512-ALK	Alkaline Test Filter (pH Booster)
OPDP5850-7E12-J574	3/8" JG Inlet/Outlet Delivery Pump .64 GPM at 60 PSI
OPOR-13824T	O-Ring PRO-Q Replacement

RO Series Faucet Options

Model #	Finish #	Description
OP1019299	Finish # 1	Polished Chrome
OP1019301	Finish # 2	Brush Nickel
OP1019303	Finish # 3	Arctic White
OP1019305	Finish # 4	Light Biscuit - Non Stock
OP1019311	Finish # 5	Rubbed Bronze
OP1019307	Finish # 6	Black - Non Stock
OP1020518	Finish # 7	Brushed Stainless

Ultraviolet Series

The **OPSCO Ultraviolet Series** is an effective way to provide **safe, bacteria-free, water for your home or office 24 hours a day 7 days a week**. The PFC Ultraviolet Disinfection Systems are setting the standards for water disinfection requirements in the industry.

FEATURES:

- Chipped Lamp- IC Models ONLY
- Touchscreen Visual & Audible Alarms
- 30 Day Replacement Alarm & Countdown Timer
- Lamp Life Expired Alarm
- UV Lamp Out Alarm
- UV Intensity Low Output Alarm
- 365 Day Resettable Lamp Life Counter
- Built in Surge Protector and Fuse
- 1" & 3/4" Standard Inlet and Outlet
- Flow Control
- Solenoid Valve Connection
- Site Port

BENEFITS:

- Tasteless & Odorless
- Eliminates microbiological contaminants without chemicals.
- Bacteria, viruses and other organisms are destroyed safely inside a factory sealed and tested stainless steel chamber.

OPSCO Systems

Model#	Max. Flow GPM	No. Lamps	KW @ 120 V	AMP @ 120V	AMP @ 220V	Pipe Size	Overall Dimensions L x W x D	Unit Weight
OPSCO-8	8	1	0.048	0.4	0.088	1" MNPT	24" x 6" x 8"	8.5 lbs.
OPSCO-12	12	1	0.048	0.4	0.088	1" MNPT	36" x 6" x 8"	11.5 lbs.
OPSCO-20	20	1	0.048	0.4	0.088	1" MNPT	40" x 6" x 8"	15.5 lbs.

OPSCO Systems with Chipped Lamp

Model#	Max. Flow GPM	No. Lamps	KW @ 120 V	AMP @ 120V	AMP @ 220V	Pipe Size	Overall Dimensions L x W x D	Unit Weight
OPSCO-8IC	8	1	0.048	0.4	0.088	1" MNPT	24" x 6" x 8"	8.5 lbs.
OPSCO-12IC	12	1	0.048	0.4	0.088	1" MNPT	36" x 6" x 8"	11.5 lbs.
OPSCO-20IC	20	1	0.048	0.4	0.088	1" MNPT	40" x 6" x 8"	15.5 lbs.

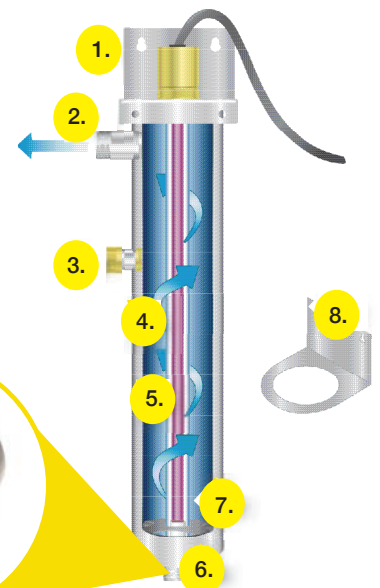
Parts Breakdown:

1. Mounting Bracket
2. Outlet
3. Site Port
4. Quartz Sleeve
5. UV Lamp
6. Inlet
7. Quartz Sleeve Stabilizer
8. Mounting Brackets come w/ all PFC models.

1" MNPT

Flow Control

3/4" FNPT



Sentry Dry Pellet Chlorinators

Model #	Description
SIC-110	Pellet Dropper - 110V
SIC-220	Pellet Dropper - 220 V
M120005	Wire w/ Vent Kit

Chemicals

Model #	Description
ATS ALUM	8 lb. Jar of Alum
ATS SODA ASH	25 lb. Pail of Soda Ash
SODA ASH 50	50 lb. Bag of Soda Ash

Pro Products

Model #	Description	Product Type
RO65N	5 lb. Rust Out	Rust Out
RK32N	1 qt. Res Care 12/case	Res Care
RK41N	1 gal. Res Care	Res Care
RU64N	4 lb. Citric Acid 6/case	Citric Acid
SM65N	5 lb. Softener Mate 6/case	Softener Mate
HP05N	5 gal. Pail Neutra Sul	Peroxide
RR1-2.5-CS	Rid 'O Rust 2.5 gallons	Rust Out

Chlorine Pellets / Potassium

****Hazardous Material Shipped with Common Carrier Freight or Pick-Up Only****

Model #	Description
C21010	10 lb. Bucket (Sentry) 4/case
C21035	35 lb. Bucket (Sentry) 1/case
C21005	5 lb. Bucket (Sentry) 6/case
C20700	Twin Pack Well Sanitizer (Sentry) 6/case
LP-36	36 lb. Total 9/04 lb. Jars (Land-O-Matic)
WPCP9	4 lb. Jars (Well Pro) 9/case
KF65N	5 lb. KMN04 6/case
KF10N	10 lb. KMN04 4/case

Chlorine Pellets

Model #	Description
C21044	Chlorine 2.2 lb. Bag (20 per case)

Chlorine Test Kits

Model #	Description
M120002	Chlorine Test Kit
M120004	Chlorine Refill



SIC-110



ATS Alum



ATS Soda Ash



Chlorine Pellets



RK41N



RO65N



RU64N



KF65N



SM65N



**Greensand
Plus**



Birm



Catalytic Carbon



Coconut Carbon



ATS Calcite/Corosex

Resin

Part #	Description	Product Type
CNS	Cation Resin - Industrial 1 cu/ft. 52 lbs. 42/skid	Cation
CG8-F	Fine Mesh Cation 1 cu/ft. 52 lbs. 42/skid	Cation
SBG-2HP	Anion 1 cu/ft. 44 lb. (Arsenic)	Anion
SIR-100-HP	Anion (Nitrate) 1 cu/ft. 44 lbs.	Anion
CG10	Cation Resin 10% Hot Water/Chlorine 1 cu/ft. 52 lbs.	Cation
MBD-10	Mix Bed 1 cu/ft. 43 lbs.	Mix Bed
A4300	Ecomix .88 cu/ft. 45 lbs.	Cation
A4301	Ecomix .44 cu/ft. 21 lbs.	Cation

Bagged Media

Part #	Description	Product Type
A8000	1/4x1/8 Under Bedding 0.5 cu/ft. 50 lbs. 63/skid	Gravel
A8072-01	#20 Flint 1 cu/ft. 50 lbs. 40/skid	Gravel
A8011	Corosex 0.5 cu/ft. 50 lbs. 60/skid	pH
A8001	Neutralizer 0.5 cu/ft. 50 lbs. 56/skid	pH
A2151	Georgia Marble "OZ" 50 lb. Bag	pH
A2101	Georgia Marble "X0" 50 lb. Bag	pH
A8012	MTM 1 cu/ft. 45 lbs. 40/skid	Iron
A8045	Filter Ox Media .5 cu/ft. Bags	Iron Sulfur
A8041-PLUS	Greensand Plus 0.5 cu/ft. 45 lbs. 55/skid	Iron
A8006	Birm 1 cu/ft. 40 lbs. 40/skid	Iron
FMH	Iron / Sulfur Media 1 cu/ft. 70 lbs. 42/skid	Iron Sulfur
KL-L	Katalox Light 1 cu/ft. Bag	Iron Sulfur
HSR-13	Sulfur Media 1 Pail	Iron Sulfur
A8071	Filter Sand 1 cu/ft. 100 lbs. 25/skid	Filtration
A8014	Filter Ag 1 cu/ft. 25 lbs. 70/skid	Filtration
A8023	Filter Ag plus 1 cu/ft. 25 lbs. 70/skid	Filtration
A8056	Centaur 1 cu/ft. 33 lbs. 70/skid	Carbon
A8060	Coconut Shell Carbon 1 cu/ft. 30 lbs. 70/skid	Carbon
A8061	Acid Wash Coconut Shell 12"x40"	Carbon
AGC40-AW	12" x 40" Dust Free Carbon	Carbon
A8010	KDF 55 0.33 cu/ft. 57 lbs.	KDF
A8010-10	KDF 85 0.33 cu/ft. 57 lbs.	KDF
A8029	1 Anthracite 1 cu/ft. Bags 50 lbs.	Filtration

ATS Blended Medias

Part #	Description	Package Type
MB500	Air Injection Mix (Bag) 1.5 cu/ft. 53 lbs. 25/skid	Pail
MB700	pH Booster 80/20 Mix (Bucket) 0.5 cu/ft. 55 lbs. 26/skid	Pail
MB774	Iron Sulfur Media Mix 1.0 cu/ft. 100 lbs.	Bag
MB775	Iron Sulfur Media Mix 1.5 cu/ft. 115 lbs.	Bag/Pail
MB776	Iron Sulfur Media Mix 2.0 cu/ft. 160 lbs.	Bag/Pail
MB777	Iron Sulfur Media Mix 2.5 cu/ft. 320 lbs.	Bag/Pail
MB800	Aeromax Filter Mix (Bag) 1.5 cu/ft. 74 lbs.	Pail
JUG-8000	1/4 x 1/8 Under Bedding 10 lbs.	Jug
JUG-8072-01	# 20 Flint 10 lbs.	Jug
JUG-8011	Corosex 10 lbs.	Jug

Microline RO System Parts & Accessories

Model #	Description
S7011	5 Micron Sediment Filter
S7025	GAC Cartridge
S7206W	In-Line Post Carbon Filter
S7028	Sediment / Carbon Filter
S1224RS	CTA Membrane 14 GPD
S1227RS	TFC Membrane 25 GPD
S1229RS	TFC Membrane 35 GPD for TFC-4 & CTA-25D
S2116-05	Drain Restrictor Membrane - Green 25 GPD
S1089-08	TFC-4 Long Reach Faucet w/ Air Gap 3/8" w/ JG
S1089-02WH	TFC-4 Long Reach White Faucet w/ Air Gap 3/8" w/ JG
S1399	Shut Off for Romate
S1118-01	Inlet Piercing Valve



S7206W



S7011



S7028

ATS 102 & 102A Parts & Accessories

Model #	Description
10-2	70 GPD Membrane
38-TK	White Metal Pressure Tank
C2003F	14 gal. Pressure Tank
CL-10-T33	Inline Carbon RO Catridge 1/4" x 1/4"



S7025



S1224RS



S1227RS



V7300 / Pro Touch



V1EE



Air Blocker



Hold Down



Mixing Valve



Stack Puller



**Alternating Touchscreen
Twin Valve**

Clack Control Valves - WS1EE Series

Model #	Description
V7300F	1" Touchscreen Filtering Valve - Replacement Only
V7300DT	1" Touchscreen Downflow Time Clock Valve - Replacement Only
V7300D	1" Touchscreen Downflow Metered Valve - Replacement Only
V7300U	1" Touchscreen Upflow Metered Valve - Replacement Only
V7400F	1.25" Touchscreen Filter Valve - Replacement Only
V7400D	1.25" Touchscreen Downflow Metered Valve - Replacement Only
V1EEBTZ	1" Backwash Filter Valve - Replacement Only
V1EEDTE	1" Downflow Timer Valve - Replacement Only
V1EEDME	1" Downflow Metered Valve - Replacement Only
V1UMC	1" Upflow Metered Valve - Replacement Only
V125EEBTZ	1.25" Filter Valve - Replacement Only
V125EEDMH	1.25" Downflow Metered Valve - Replacement Only

Clack Control Valves Accessories

Model #	Description
V3006	Bypass Assembly
V3191-01	Vertical Bypass Adapter
V3193-02	Service Spanner Wrench
D1301	Distributor Hold Down Retainer
D1047	Air Blocker for EdAuctor Series
V3022	WS1 Stack Puller Tool
V4099	External Mixing Valve
ATS-EOG	03 General Control

Clack Control Valve Plumbing Connections

Model #	Description
V3007	1" Male Elbow Assembly
V3007-01	3/4" x 1" PVC Solvent Elbow Assembly
V3007-02LF	WS1 Fitting 1" Brass Sweat Assembly LF
V3007-03LF	WS1 Fitting 3/4" Brass Sweat Assembly LF
V3007-04	WS1 Fitting 1" Plastic Male NPT Assembly
V3007-05	WS1 Fitting 1-1/4" Plastic Male NPT Assembly
V3007-07	WS1 Fitting 1-1/4" & 1-1/2" PVC Solvent Assembly
V3007-09LF	WS1 Fitting 1-1/4" & 1-1/2" Brass Sweat Assembly LF
V3007-12LF	3/4" Shark Bite Assembly
V3007-13LF	1" Shark Bite Assembly
V3007-15	3/4" JG Quick Connect Assembly Elbows
V3007-17	WS1 Fitting 1" John Guest QC Assembly
V3007-18	WS1 Fitting 3/4" Plastic Male NPT Assembly
V3007-19	WS1 Fitting 3/4" Straight John Guest QC
V3007-20	1" JG Quick Connect Assembly Elbows

Alternating Twin Tank Series

Model #	Description
VTT1EEDME	Twin Alternating Control Valve
V7300TA	Twin Alternating Touchscreen Control Valve

Contaminant Levels

Contaminants

Contaminant Inorganic Chemicals	Proposed	Max Level
Antimony	-	.006 mg/L
Arsenic	-	.5 mg/L
Asbestos	7 Million fibers/L	-
Barium	-	2 mg/L
Beryllium	-	.004 mg/L
Cadmium	-	.005 mg/L
Chromium	-	.1 mg/L
Copper	-	1.3 mg/L
Cyanide	-	.2 mg/L
Fluoride (depending on temperature)	-	4 mg/L
Lead	0.015 mg/L TT	-
Mercury	-	.002 mg/L
Nickel	-	1 mg/L
Nitrate (as N)	-	10 mg/L
Nitrite	-	1 mg/L
Selenium	-	.05 mg/L
Silver	-	.05 mg/L
Sulphate	400/500 mg/L	-
Thallium	-	.002 mg/L

Secondary Contaminant Levels

Contaminants	Max Level
Aluminum	.05 to .2 mg/L
Chloride	250 mg/L
Color	15 Color Units
Copper	1 mg/L
Corrosivity	Raise pH to 5 or higher
Fluoride	2.0 mg/L
Foaming Agent	.5 mg/L
Hexachlorocyclopentadiene	.05 mg/L
Iron	.3 mg/L
Manganese	.05 mg/L
Odor	3 threshold odor number
pH	6.5 to 8.5
Silver (Ag +)	.1 mg/L
Sulfate	250 mg/L
TDS	500 mg/L
Zinc	5 mg/L

Radionuclides

Contaminants	MCL
Beta Particle and Photo Activity	4 mrem / year
Radium 226 and Radium 228	20 pCi/L (P)
Radon	300 pCi/L (P)
Uranium	40 pCi/L (P)

Organic Chemical	Type of Treatment	Proposed (mg/L)	Max Level (mg/L)
Acylimide	TT		0.0005
Adipates (diethylhexyl)	2		0.4
Alchlor	1		0.002
Aldicarb	1		0.003
Aldicarb Sulfone	1		0.003
Aldicarb Sulfoxide	1		0.004
Atrazine	1		0.003
Benz (a) anthracene (PAH)	1	0.0001	-
Benzene	2		0.005
Benzo (a) pyrene (PAH)	1		0.0002
Benzo (b) fluoranthene (PAH)	1	0.0002	-
Benzo (k) fluoranthene (PAH)	1	0.0002	-
Butyl benzyl phthalate (PAH)	1	0.1	-
Carbon Tetrachloride	2		0.005
Carbofuran	1		0.04
Chlordane	1		0.002
Chrysene (PAH)	1		0.0002
Dalapon	1		0.2
Dibenz (a,h) anthracene (PAH)	1		0.0003
Dibromochloropropane	2	0.0002	-
Dychlorobenzene (para-)	2		0.075
Dichloroethylene (1,1-)	2		0.007
Dychloromethane	-		-
(methylene chloride)	1	0.005	-
Diethylhexal phthalate (PAH)	1		0.006
Dinoseb	1		0.007
Diquot	1		0.02
Endothall	1		0.1
Endrin	1		0.002
Epochlorohydrin	TT		0.002
Ethylbenzene	2		0.7
Ethyl Dibromide (EDB)	2		0.00005
Glyphosate	1		0.7
Heptachlor	1		0.0004
Haptochlor Epoxide	1		0.0002
Hexachlorobenzene	1		0.001
Hexachlorocyclopentadiene	2		0.05
Indeno (1,2,3-c,d) pyrene	1	0.0004	-
Lindane	1		0.0002
Methoxychlor	1		0.4
Monochlorobenzene	2		0.1
Oxymyl (Vydate)	1		0.2
PCB's	1		0.0005
Pentachlorophenol	1		0.001
Picloram	1		0.5
Simazine	1		0.004
Styrene	2		0.005
Terochloroethylene	2		0.005
Toluene	2		1
Toxaphene	1		0.003
Trichlorobenzene (1,2,4)	2		0.07
Trichloroethane (1,1,1-)	2	0.005	0.2
Trichloroethane (1,1,2-)	2		-
Trichloroethylene	2		0.005
Vinyl Chloride	3		0.002
Xylenes	2		10
o-Dichlorobenzene	2		0.6
1,2 Dichloropropane	2		0.005
1,2 Dichloroethane	2		0.005
cis-1,2-Dichloroethane	2		0.07
trans-1,2-Dichloroethylene	2		0.1
2,3,7,8 TCDD (Dioxin)	1		3 x 10-8
2,4-D	1		0.07
2,4,5-TP Silvex	1		0.05
THM	2		0.1
Turbidity	-		1TU-5TU
Coliform Bacteria	-		1/100

Safe drinking water act of 1974 and 1986 and proposed Primary Contaminants Levels. These regulations are updated and changed continuously. Note: For specific information contact either your regional EPA, or State Health Dept.

Note: TT = Treated tested ie; Corrosive Acid Water = Raise pH.

1 = Activated Carbon

2 = Aeration and Activated Carbon

3 = Aeration Only

Quick Reference Guide

Problem (Cause)	Symptoms	Max Level of Contamination	Product Type
Hardness / Chlorine (dissolved calcium in magnesium water with sodium hypochloride)	White deposits on dishes and fixtures. Water has a chlorine taste and odor	Less than 1ppm chlorine 0-1 gpg soft	Softener Big Blue #20 Housing & Filter
Hardness/ Hard Water (dissolved calcium in magnesium water)	Soap deposits on dishes and clothing. Soap curd in sinks and bath tubs. Scale build-up in water heaters, plumbing and fixtures. Clothes look gray and unclear.	0-1 gpg soft 1-3.5 gpg slightly hard 3.5-7 gpg moderately hard 7-10.5 gpg hard 10.5+ gpg very hard	Softener
Acid Water (pH less than 7)	Blue-green stains and corrosion on fixtures, plumbing and appliances that use water. Fixtures and dishes will begin pitting.	pH > 7 pH < 7 & > 5.8 pH < 5.5	Feed Pump System Acid Neutralizer
Iron / Manganese (rock Formation)	Yellow, brown, rusty or black stains on fixtures, plumbing and appliances that use water. Metallic taste. Water is generally clear when drawn but turbidity appears when left standing (clear water iron-ferrous). Water with tint when drawn (red water iron-ferrous).	Iron pH > 0.3 Manganese pH > 0.05	Feed Pump System Acid Neutralizer
Hydrogen Sulfide (decaying vegetation)	Rotten egg odor, staining or rusting of plumbing. Silver tarnishes on contact with water.	No established mc/l level	Air Pump Filter Air Eduction Filter Greensand Filter
Nitrates (nitrates & bacterias)	Blue Baby syndrome	10 ppm	Reverse Osmosis
Dissolved Solids (water is the universal solvent)	Contaminants in drinking water. Bad taste due to minerals and hazardous materials such as lead, bacteria, chlorine and foreign matter	500 ppm	Reverse Osmosis
Fluorides	Can damage tooth enamel. Causes to turn chalk white or brown.	2 ppm	Reverse Osmosis
Bacteria	Stomach ache, dysentery	0 mg/l	UV Disinfection System

REV. January, 2023

MANUFACTURER'S LIMITED WARRANTY

In accordance with the Manufacturer's warranty, and subject to the conditions hereinafter set forth, Orchard Pump will repair or replace to the original user or consumer, equipment, parts or components found to be defective in manufacturing or workmanship.

WARRANTY PERIODS:

			Residential	Commercial Industrial	Hot Water
Orchard Pump Stainless Steel Tanks*	10 yrs.	GE / Autotrol Softener/Filter Valve	5 yrs.	20 mo.	
Structural Polyglass & FRP Mineral Tanks (6"-13" dia.)*	10 yrs.	Fleck Controls Softener/Filter Valve <i>after May 2001</i>	5 yrs.	5 yrs.	1 yr.
Structural Polyglass & FRP Mineral Tanks (14"+ dia.)*	5 yrs.	Clack Controls Softener/Filter Valve	5 yrs.	5 yrs.	
Chemical Feed Pump Systems	1 yr.	Polyethylene Brine Tanks	5 yrs.		
* Vessels must be operated within the prescribed pressure ♦ and temperature ratings stated on tank labels. Stainless Steel Tanks Warranty is void if the serial # is removed, tank is exposed to electrolysis, or is buried.		Reverse Osmosis (excludes cartridge filters and membranes)	5 yrs.		

WARRANTIES NOT APPLICABLE: To defects or malfunctions resulting from failure to properly install, operate or maintain the unit in accordance with printed instructions; failure to use Orchard Pump authorized replacement parts, to failures resulting from shipment or handling, abuse, accident, negligence, freezing, fire or heat, direct exposure to weather or sunlight, water temperatures and pressures exceeding specifications, flooding or other acts of God not considered normal operating condition; to normal maintenance services and the parts used in connection with such service; to units which are not installed in accordance with applicable local codes, ordinances and good trade practices; if the unit is moved from its original installation location; or if unit is used for purposes other than for what it was designed and manufactured.

LABOR COSTS, LIABILITY: Orchard Pump & Supply Co., shall ***IN NO EVENT*** be responsible or liable for the cost of field labor or other charges incurred by any customer in installing, removing and/or reaffixing any Orchard Pump, part or component thereof, or be liable for any injury, loss or damage, direct or indirect, special or consequential, arising out of the use of, misuse, or the inability to use such product. Before use, Distributor, Dealer or User shall determine the suitability of the product for his/her intended purposes, and shall assume all risk and liability in connection therewith.

RETURNS: A ***RETURN MERCHANDISE AUTHORIZATION NUMBER (RMA #)*** is required on ***ALL RETURNS***. Contact Orchard Pump to obtain this number. The RMA # ***MUST*** be clearly written on the outside of the package. Address shipments to the Return Department Orchard Pump & Supply Co., 2813 Westbranch Hwy, Lewisburg, PA, 17837, and freight prepaid. All returns should be accompanied with a written description of mode or reason of failure. The customer must order Orchard Pump replacement parts if required as a standard purchase until the defective part is received and evaluated by the factory. Orchard Pump will inspect, test, and determine the cause of defective components or parts. Orchard Pump at its sole discretion will make necessary repairs to or replace components. Orchard Pump will determine the extent of the warranty coverage and the proper warranty credit to be applied. The return freight will be credited to the customer for warranty repairs or replacements. For your warranty protection, the warranty card must be completed and returned to Orchard Pump within 10 days of installation. In the absence of other suitable proof of installation date, the effective date of this warranty will be based on the date of manufacture plus 30 days. This warranty gives you specific legal rights and you may also have other rights, which vary, from state to state.



OPSCO

CLEAN WATER SYSTEMS

A DIVISION OF ORCHARD PUMP & SUPPLY CO.